

# *Layouts & Concepts*



## **EVent®** Ventless Griddle



## **Foodservice Portfolio**



# Rogers Arena

Encore Suite: 262-Seat All-Inclusive, Premium Club with Ever Changing Menu

Sports Venue



*"Our fans are LOVING this action station. Given the unique setting we are in it was very important that our fans can see the cooking BUT not smell aroma or grease laden vapor."*

*Robert Bartley, Executive Chef  
Canucks Sports & Entertainment*

## Signature Chef Station



**EVent® 48E**  
Ventless Griddle





# OTG

## Global Bazaar Food Hall in Newark Liberty Airport Terminal C

Airport

**OTG**

### Dynamic Shared-Use Outlets

Outlets begin the day as Crepe Juliet, Flip Flop Pancake Shop and Breakfast Boli, before transforming into Wabi-Sabi, Notorious P.I.G. BBQ, and Uptop Pizzeria for the afternoon and evening.



**EVent® 48E**  
Ventless Griddle





# ShopRite

Kiosk in the Village Food Garden Food Hall

Grocery



## International Street Food

Made-to-order grilled sandwiches from around the globe.



**EVent® 35E**  
Ventless Griddle





# University of Alabama

Mal Moore Athletic Facility Dining Hall

Campus Dining

THE UNIVERSITY OF  
**ALABAMA**<sup>®</sup>

## Nutrition Center for Athletes

Cook-to-Order Stations



*The Mal Moore  
Athletic Facility  
helps ensure all  
athletes have the  
nutrition they need  
to succeed.*

**EVent<sup>®</sup> 48E**  
Ventless Griddle





# Guy Fieri's Taco Joint

Fast-casual concept by Emmy-award winning chef, restaurateur, author and TV personality, Guy Fieri.

Fast Casual



Scratch Made Tacos  
with House Made Salsa



E<sup>V</sup>ent<sup>®</sup> 35E  
Ventless Griddle





# Grand Forks Air Force Base

Airey Dining Facility Managed by Aramark

Military



## Big City Grille Station

Specialty selections & seasonal flavors.



## EVent® 48E

Ventless Griddle





# Sandals

Dramatic, Entertaining Teppanyaki Experience at “Kimono’s”

World-Class Resort

*Sandals*

**Theatrical Oriental Cuisine**



**EVent® 48E**  
Ventless Griddle





# Ford Field

Food Court for South Club Premium Seating

Sports Venue



**Local Eats**

Mexican Steakhouse



**EVent® 48E**  
Ventless Griddle





# Pine Manor College

Aladdin Managed Student Dining Hall

Campus Dining



Pine Manor  
College

## Interactive Asian Noodle Bar

Choice of ingredients, portion size and seasoning.



**EVent® 48E**  
Ventless Griddle





# Shades of Green

Armed Forces Recreation Center at Disney World Resort

World-Class Resort



## Garden Gallery Buffet

Breakfast, Lunch & Dinner Buffet Action Station



**EVent® 48E**  
Ventless Griddle





# Otterbein SeniorLife

Restaurant Style Dining at Café 1912

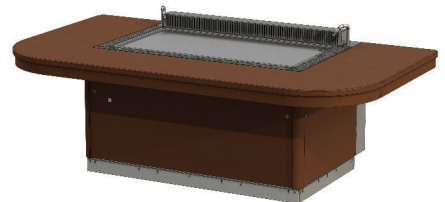
Senior Living



## Chef Dining Table



**EVent® 48E**  
Ventless Griddle





# Temptation Cancun Resort

Asiatic Specialities at “SUTRA”

World-Class Resort

TEMPTATION  
CANCUN RESORT®

**Five International Cuisines:**  
China, Japan, India, Vietnam & Thailand



**EVent® 48E**  
Ventless Griddle





# Florida Aquarium

Café Ray Operated by Aramark

Attraction

**THE FLORIDA  
AQUARIUM** 

## American Grill

Breakfast, Lunch & Dinner Cooked to Order



**EVent® 35E**  
Ventless Griddle





# Fresh & Co

New York Based Chain Serving Locally-Sourced Seasonal Food

Fast Casual

**fresh&co**

## Market Fresh Bowls & Salads

Made-to-order and customizable  
with all natural and organic ingredients.



**Evo® 35E**  
Ventless Griddle





*"The thing I'm most excited about is the installation of a super grill (Evo Event) at this location. There will be an ever-changing menu of grilled foods available: sausages, burgers, stir-frys, gourmet grilled cheese etc."*

**Chef Josh Dracle**



Farm Boy

# WHEN PERFORMANCE MATTERS



Evo America, LLC  
20360 SW Avery Ct.  
Tualatin, OR 97062

(503) 626-1802  
sales@evoamerica.com  
evoamerica.com

**evo**

Evo is protected under U.S. Patents 9,897,328, 9,869,474, 10,139,113, 9,903,595, 10,842,540, 7,825,353 and U.S. Patents Pending.  
Evo is a registered trademark of Evo America, LLC ©2021 All rights reserved.

PART OF **MIDDLEBY**