



Evo, Inc.
20560 SW 115th Ave.
Tualatin, OR 97062
P 503-626-1802 • F 503-213-5869
www.evoamerica.com

Project: _____
Location: _____
Item #: _____ Qty: _____
Model #: _____

AIA #

SIS#

QL22

Model# **QL22**

Basic Double Doors




RONDA
Distributed by Evo, Inc.

34" Wide Cutout

Hermetically Sealed Enclosure

Top Quality Materials for Long Life

- Double doors completely made of 304 stainless steel with angular hinges.
- Watertight composite frame with 34" wide cutout.

Ease of Use

- Seamless flush recessed pull handle.
- Hinged doors allow a full opening to access storage.
- Ergonomic and perfectly smooth for ease of cleaning.

Professional Design

- Multiple styles of drawer and drawers allows designers to quickly construct quality NSF foodservice counters.
- For indoor or outdoor use.
- Convenient and fast installation.

SHORT FORM SPECIFICATIONS:

Self-contained, NSF certified, double-doors in 34" wide integrated frame. Double 304-stainless steel insulated doors measuring 21.25" x 35.27" has replaceable magnetic gasket providing a hermetic watertight seal. Door face frame made from high-strength composite allows easy installation to indoor and outdoor kitchen cabinet installations.

Data

Model	INNER Frame Dimensions			OUTER Door Front Dimensions			Weight
	H	W	D	H	W	D	
QL22	20" 507mm	34" 863mm	2 3/8" 60mm	21 1/4" 540mm	35 9/32" 896mm	2 11/32" 59.5mm	32 lbs 14.6 kg

Due to ongoing product improvement, specifications are subject to change without notice.

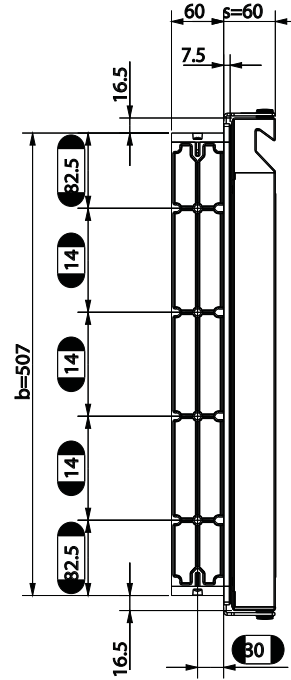
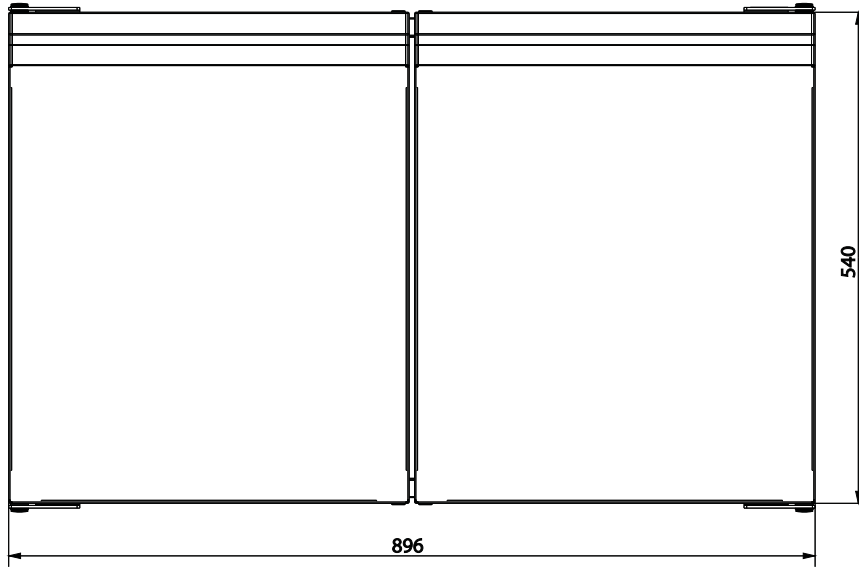


Approvals:

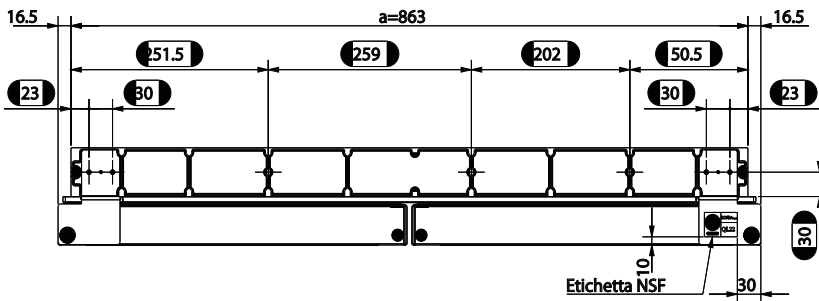
Available At:

Front

Side



Top



Evo, Inc. is the North and South America Distributor for Ronda Drawers and Doors

Evo, Inc., 20560 SW 115th Ave., Tualatin, OR 97062
 Ph 503-626-1802 • Fax 503-213-5869 • www.evoamerica.com • sales@evoamerica.com
 Evo® is a registered trademark of Evo, Inc. Ronda® is a registered trademark of Ronda S. p.A.